

SonicWall® TZ300 / TZ300 Wireless

Quick Start Guide

Regulatory Model Numbers:

APL28-0B4 – TZ300

APL28-0B5 – TZ300W



Copyright © 2019 SonicWall Inc. All rights reserved.

SonicWall is a trademark or registered trademark of SonicWall Inc. and/or its affiliates in the U.S.A. and/or other countries. All other trademarks and registered trademarks are property of their respective owners.

The information in this document is provided in connection with SonicWall Inc. and/or its affiliates' products. No license, express or implied, by estoppel or otherwise, to any intellectual property right is granted by this document or in connection with the sale of SonicWall products. EXCEPT AS SET FORTH IN THE TERMS AND CONDITIONS AS SPECIFIED IN THE LICENSE AGREEMENT FOR THIS PRODUCT, SONICWALL AND/OR ITS AFFILIATES ASSUME NO LIABILITY WHATSOEVER AND DISCLAIMS ANY EXPRESS, IMPLIED OR STATUTORY WARRANTY RELATING TO ITS PRODUCTS INCLUDING, BUT NOT LIMITED TO, THE IMPLIED WARRANTY OF MERCHANTABILITY, FITNESS FOR A PARTICULAR PURPOSE, OR NON-INFRINGEMENT. IN NO EVENT SHALL SONICWALL AND/OR ITS AFFILIATES BE LIABLE FOR ANY DIRECT, INDIRECT, CONSEQUENTIAL, PUNITIVE, SPECIAL OR INCIDENTAL DAMAGES (INCLUDING, WITHOUT LIMITATION, DAMAGES FOR LOSS OF PROFITS, BUSINESS INTERRUPTION OR LOSS OF INFORMATION) ARISING OUT OF THE USE OR INABILITY TO USE THIS DOCUMENT, EVEN IF SONICWALL AND/OR ITS AFFILIATES HAVE BEEN ADVISED OF THE POSSIBILITY OF SUCH DAMAGES. SonicWall and/or its affiliates make no representations or warranties with respect to the accuracy or completeness of the contents of this document and reserves the right to make changes to specifications and product descriptions at any time without notice. SonicWall Inc. and/or its affiliates do not make any commitment to update the information contained in this document.

For more information, visit <https://www.sonicwall.com/legal/>.

Legend

WARNING: A WARNING icon indicates a potential for property damage, personal injury, or death.

CAUTION: A CAUTION icon indicates potential damage to hardware or loss of data if instructions are not followed.

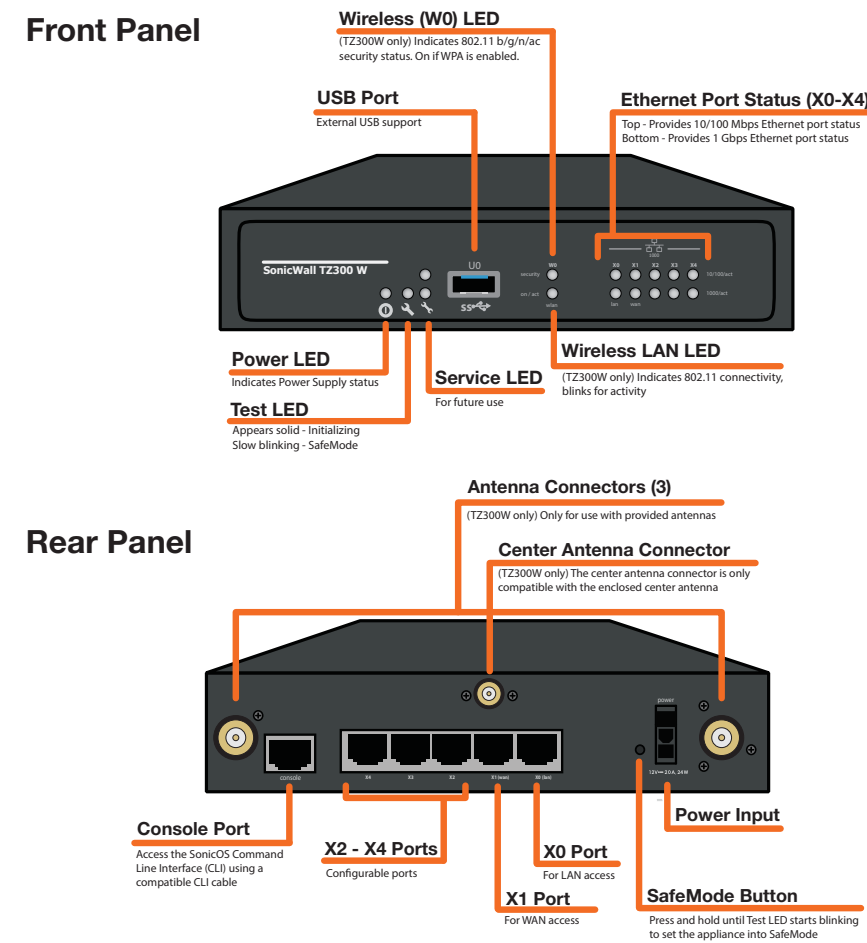
IMPORTANT, NOTE, TIP, MOBILE, or VIDEO: An information icon indicates supporting information.

To access the Support Portal, go to <https://www.sonicwall.com/support>.

TZ300 / TZ300W Quick Start Guide
Updated - June 2019
232-003785-51 Rev A



1 TZ300 / TZ300W Front and Rear Panels



2 Check Package Contents

Verify that your package has the following contents:

- SonicWall TZ300 or TZ300 Wireless appliance
- Antennas (3) (TZ300 Wireless appliance only)
- Ethernet cable
- Standard power adapter
- Standard power cord
- Quick Start Guide
- Safety Environmental Regulatory Information (SERI)

NOTE: The included power cord is approved for use only in specific countries or regions. Before using a power cord, verify that it is rated and approved for use in your location.



3 Deploy Using Zero-Touch



Your SonicWall appliance is *Zero-Touch* enabled.

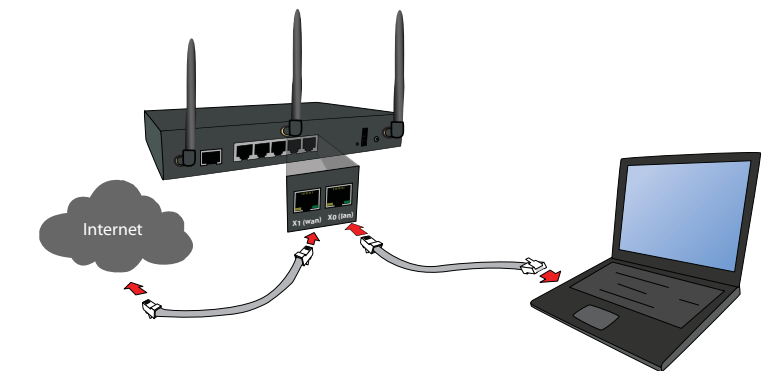
Zero-Touch makes it easy to register your unit and add it to Capture Security Center for management and reporting in 3 simple steps.

For information about using Zero-Touch, see the [Zero-Touch Deployment Guide](#) on the Support portal.

After completing the Zero-Touch deployment process, you can skip to [Mounting the TZ Appliance](#) in this guide. For non Zero-Touch deployments, continue with the next section.

4 Connect Interfaces and Power On

- Connect the WAN interface (X1) to your Internet connection using a standard Ethernet cable.
- Connect the LAN interface (X0) to your computer using a standard Ethernet cable.



- Connect the antennas to the appliance (TZ300W appliance only).

NOTE: The center antenna is labeled and is only compatible with the center antenna connector.

- Connect the power adapter to the appliance and to the power cable. Plug the power cable into an appropriate outlet (100-240 volts AC).



- The TZ appliance powers on, and the Test LED lights up during the boot sequence and then turns off when the boot sequence is complete.



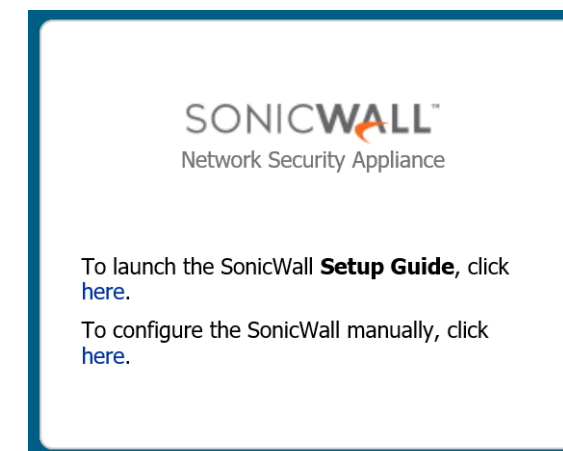
CAUTION: Only use the included power adapter with this appliance. Do not use a power adapter that is damaged or from another appliance.

5 Run the Setup Wizard

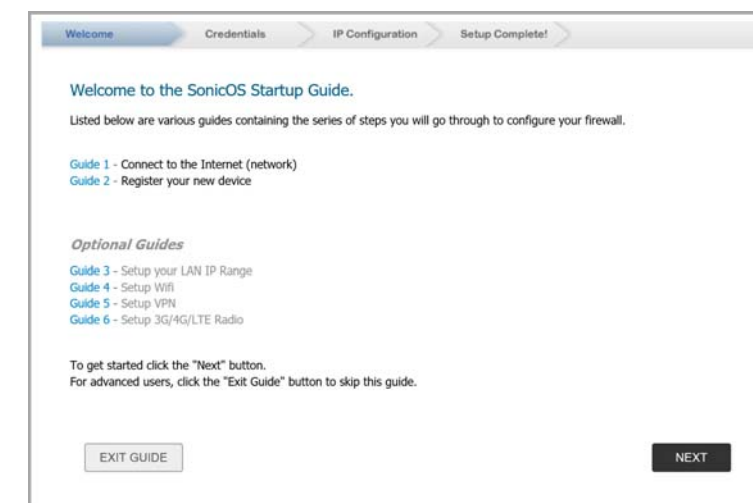
- Navigate to <https://192.168.168.168> in your web browser.

TIP: Your computer should be using DHCP IP addressing.

- Click on the link in "To launch the SonicWall Setup Guide, click here."



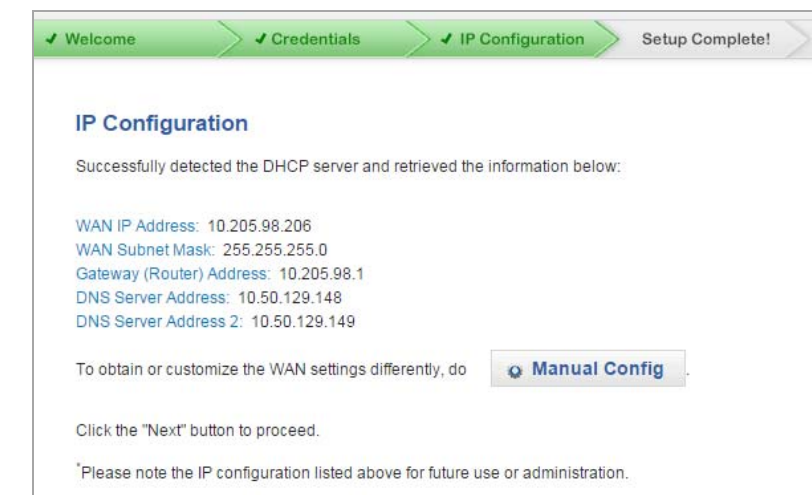
- The SonicOS Startup Guide opens.



- Click **NEXT** and follow the prompts in the Startup Guide.
- In the Credentials screen, enter a new administrator password. Click **NEXT**.

NOTE: The default administrator credentials are **Username: admin** **Password: password**

- The automatically assigned DHCP IP settings are displayed in the IP Configuration screen. Click **NEXT**.



NOTE: For manual configuration, refer to the latest *SonicOS Quick Configuration* administration documentation.

- In the Setup Complete screen, review the settings and then click **DONE**. The SonicOS login screen displays.

6 Register Product

Registration is an important part of the setup process and is necessary in order to receive the benefits of SonicWall security services, firmware updates, and technical support.

To register the appliance from SonicOS:

- Continue from the Setup Guide or point your browser to the appliance LAN IP address (default <https://192.168.168.168>) and log in using the administrator credentials.
- Click **Register** in the top banner or on the **MONITOR | Current Status | System Status** page under **Security Services**.

Your SonicWall is not registered.
Click here to [Register your SonicWall](#).

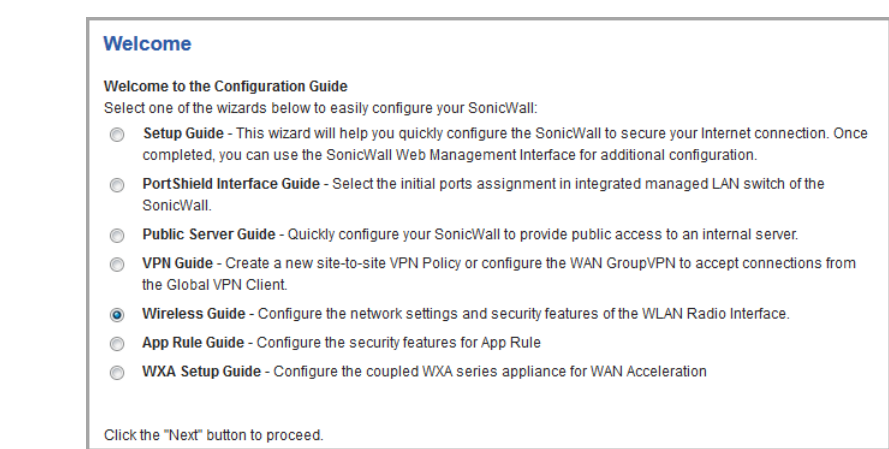
TIP: Registering the appliance from SonicOS requires that DNS Server settings are configured on the WAN (X1) interface.

- Log in using your MySonicWall account name and password. If you do not have a MySonicWall account, go to <http://www.mysonicwall.com> to create an account.
- MySonicWall directly obtains the necessary information from the appliance. When finished, you will see a message that registration has been completed. Click **CONTINUE**.



7 Configuring Wireless LAN Settings

- Log in to your TZ appliance and click **QUICK CONFIGURATION** at the top of the screen.
- Select the radio button for the **Wireless Guide** wizard.



- Click **Next** and follow the prompts in the Wireless Guide wizard. For more information and complete procedures, refer to the latest *SonicOS Quick Configuration Guide*.



Veillez à ce que l'air puisse facilement circuler autour de l'unité et à travers les aérations prévues sur le côté de l'unité. Laissez un espace d'au moins 25,44 mm.

Soyez particulièrement vigilant quant au raccordement de l'équipement au circuit d'alimentation. Respectez pour cela les mentions figurant sur la plaque d'identification du produit. Ne surchargez pas le circuit.

Avertissement Relatif à la Batterie au Lithium

La batterie au lithium située à l'intérieur de l'appareil de sécurité SonicWall ne peut en aucun cas être remplacée par l'utilisateur. L'appareil SonicWall doit être renvoyé à un atelier agréé SonicWall pour qu'on y procède au remplacement de la batterie par un modèle identique ou équivalent recommandé par le fabricant. Si, pour une raison ou une autre, la batterie ou l'appareil de sécurité SonicWall doit être mis au rebut, respectez les consignes du fabricant de la batterie en la matière.

Raccordements

Tous les câbles Ethernet et RS232 (console) sont conçus pour la connexion à d'autres appareils à l'intérieur d'un même bâtiment. Ne reliez pas ces ports directement à des câbles de communication ou à d'autres câbles qui sortent du bâtiment dans lequel se trouve l'appareil SonicWall.

Informations sur l’alimentation Électrique

Si le bloc d'alimentation ne se trouve pas dans l'emballage de votre produit SonicWall, veuillez communiquer avec l'assistance technique de SonicWall au <https://www.sonicwall.com/support/contact-support> pour obtenir un remplacement. Ce produit ne doit être utilisé qu'avec un bloc d'alimentation homologué UL, portant la mention « I.T.E. LPS » et d'une puissance de sortie nominale de 12 V CC, 2,0 A minimum, TA : 40 °C minimum.

Verwarnung Weitere Hinweise zur Montage

Wählen Sie für die Montage einen Ort, der keinem direkten Sonnenlicht ausgesetzt ist und sich nicht in der Nähe von Wärmequellen befindet. Die Umgebungstemperatur darf nicht mehr als 40 °C betragen.

Führen Sie die Kabel nicht entlang von Stromleitungen, Leuchtstoffröhren und Störquellen wie Funksendern oder Breitbandverstärkern.

Das im Lieferumfang enthaltene bzw. die im Lieferumfang enthaltenen Netzkabel sind nur für die Verwendung in bestimmten Ländern und Regionen zugelassen. Überprüfen Sie bitte vor der Verwendung eins Netzkabels, ob es für die Verwendung in Ihrem Land oder Ihrer Region zugelassen ist und den geforderten Normen entspricht.

Stellen Sie sicher, dass das Gerät vor Wasser und hoher Luftfeuchtigkeit geschützt ist.

Stellen Sie sicher, dass die Luft um das Gerät herum zirkulieren kann und die Lüftungsschlitze an der Seite des Gehäuses frei sind. Hier ist ein Belüftungsabstand von mindestens 26 mm einzuhalten.

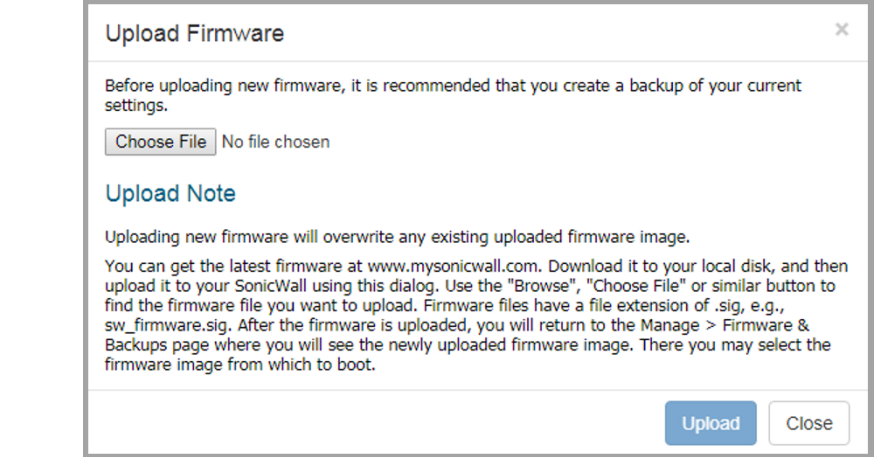
Prüfen Sie den Anschluss des Geräts an die Stromversorgung, damit der Überstromschutz sowie die elektrische Leitung nicht von einer eventuellen Überlastung der Stromversorgung

For international (non USA or Japan) TZ300 Wireless appliances, you are asked to select a country code when using the Wireless Guide or when you initially navigate to the **MANAGE | Connectivity | Wireless > Base Settings** page. Be sure to select the country code for the country in which the appliance will be deployed, even if you are not currently in that country.

IMPORTANT: If you select the country code for Canada, it cannot be changed except by contacting SonicWall Support.

8 Getting the Latest Firmware

- In a web browser, navigate to <http://www.mysonicwall.com>.
- Navigate to **Resources & Support > My Downloads** and select **TZ Series** from the **Select a Product** drop-down menu.
- Click the download button for the firmware you want and save the file to a location on your computer.
- On the TZ appliance, navigate to the **MANAGE | Updates | Firmware & Backups** page and click **Upload Firmware**.
- Click the **Choose File** button to select the firmware you just downloaded, then click **Upload**.



- Click the **Boot** icon for your new firmware.



beeinflusst werden. Prüfen Sie dabei sorgfältig die Angaben auf dem Aufkleber des Geräts. Überlasten Sie nicht den Stromkreis.

Dieses Gerät ist nicht zur Verwendung an Arbeitsplätzen mit visuellen Anzeigeräten gemäß § 2 der deutschen Verordnung für Arbeitsplätze mit visuellen Anzeigeräten vorgesehen. Um störende Reflexionen am Bildschirmarbeitsplatz zu vermeiden, darf dieses Produkt nicht im unmittelbaren Gesichtsfeld platziert werden.

Verwarnung Hinweis zur Lithiumbatterie

Die in der Internet Security Appliance von SonicWall verwendete Lithiumbatterie darf nicht vom Benutzer ausgetauscht werden. Zum Austauschen der Batterie muss die SonicWall in ein von SonicWall autorisiertes Service-Center gebracht werden. Dort wird die Batterie durch denselben oder entsprechenden, vom Hersteller empfohlenen Batterietyp ersetzt. Beachten Sie bei einer Entsorgung der Batterie oder der SonicWall Internet Security Appliance die diesbezüglichen Anweisungen des Herstellers.

Verwarnung Kabelverbindungen

Alle Ethernet- und RS232-C-Kabel eignen sich für die Verbindung von Geräten in Innenräumen. Schließen Sie an die Anschlüsse der SonicWall keine Kabel an, die aus dem Gebäude herausgeführt werden, in dem sich das Gerät befindet.

Informationen zur Stromversorgung

Wenn die Stromversorgung von der SonicWall-Produktpaket fehlt, wenden SonicWall den Technischen Support unter <https://www.sonicwall.com/support/contact-support>.

Dieses Produkt sollte nur mit einem für den Europäischen Markt genehmigten Netzteil mit dem Logo "I.T.E. LPS" und einer Ausgangsleistung von12 VDC, mind. 2.0 A, Tma: mind. 40 Grad C, betrieben werden.

EU and EFTA Declarations of Conformity

A “Declaration of Conformity” in accordance with the directives and standards has been made and is on file at SonicWall International Limited, City Gate Park, Mahon, Cork, Ireland.

CE declarations can be found online at <https://www.sonicwall.com/support>.

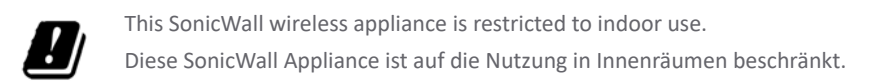
Additional for TZ300 Wireless Only

This SonicWall appliance contains radio equipment to provide 2.4 GHz and 5 GHz RLAN/ WLAN. To maintain Radio Equipment Directive 2014/53/EU compliance, use only SonicOS software and accessories provided with this appliance and by SonicWall.

Diese SonicWall Appliance enthält Funkanlagen zur Bereitstellung von RLAN/WLAN im Frequenzbereich von 2,4 GHz und 5 GHz. Verwenden Sie zur Einhaltung der Funkanlagenrichtlinie 2014/53/EU (Radio Equipment Directive - RED) ausschließlich SonicOS Software und Zubehör, das mit dieser Appliance und von SonicWall bereitgestellt wird.

To maintain safe exposure levels to electromagnetic fields, place appliance a minimum of 35 cm from all persons and domestic animals.

Zur Einhaltung unbedenklicher Expositionswerte durch elektromagnetische Felder sollte sich die Appliance mindestens 35 cm von Personen und Haustieren entfernt befinden.



This SonicWall wireless appliance is restricted to indoor use.

Diese SonicWall Appliance ist auf die Nutzung in Innenräumen beschränkt.

9 Mounting the TZ Appliance

WARNING: Do not mount the appliance on the ceiling, it is not designed for secure ceiling mounting.

For optional wall mounting, you need:

- Screwdriver
- Drill with appropriate size bit
- For mounting on drywall:
 - Two #6 pan-head screws, 1 inch long (7mm diameter head, 25mm long)
 - Two wall anchors
- For mounting on solid wood or metal:
 - Two #6 pan-head wood or machine screws, 1 inch long (7mm diameter head, 25mm long)

To mount the appliance on the wall:

- Drill two holes 4.5 inches (11.5 cm) apart in the wall where you want to mount the appliance.
- If using wall anchors, insert a wall anchor into each hole.
- Insert a screw into each wall anchor (into each hole if not using wall anchors), leaving 3/16 inches (0.45 cm) of the screws exposed (including screw head).
- Position the appliance mounting slots over the screws and press in and down until the appliance is securely mounted.

10 Safety and Regulatory Information

WARNING: For your safety, follow all instructions listed in this section.

Installing the Appliance

Install in a location away from direct sunlight and sources of heat. A maximum ambient temperature of 104º F (40º C) is recommended.

Route cables away from power lines, fluorescent lighting fixtures, and sources of noise such as radios, transmitters, and broadband amplifiers.



Frequency Band	Maximum Radio-Frequency Power Transmitted
MHz	dBm EIRP
2412 - 2472	19.06
5180 - 5240	22.19
5260 - 5320	22.07
5500 - 5700	26.29

Simplified EU/CE Declaration of Conformity - TZ300W

Hereby, SonicWall Inc. declares that the radio equipment type 2.4 GHz and 5 GHz RLAN/ WLAN is in compliance with Directive 2014/53/EU. The full text of the EU declaration of conformity is available at the following internet address: <https://www.sonicwall.com/support>

Hierbij verklaar ik, SonicWall Inc., dat het type radioapparatuur 2.4 GHz and 5 GHz RLAN/ WLAN conform is met Richtlijn 2014/53/EU. De volledige tekst van de EU-conformiteitsverklaring kan worden geraadpleegd op het volgende internetadres: <https://www.sonicwall.com/support>

Hiermit erklärt SonicWall Inc., dass der Funkanlagentyp 2.4 GHz and 5 GHz RLAN/WLAN der Richtlinie 2014/53/EU entspricht. Der vollständige Text der EU-Konformitätserklärung ist unter der folgenden Internetadresse verfügbar: <https://www.sonicwall.com/support>

Le soussigné, SonicWall Inc., déclare que l'équipement radioélectrique du type 2.4 GHz and 5 GHz RLAN/WLAN est conforme à la directive 2014/53/UE. Le texte complet de la déclaration UE de conformité est disponible à l'adresse internet suivante: <https://www.sonicwall.com/support>

С настоящото SonicWall Inc. декларира, че този тип радиосъоръжение 2.4 GHz and 5 GHz RLAN/WLAN е в съответствие с Директива 2014/53/ЕС. Цялостният текст на ЕС декларацията за съответствие може да се намери на следния интернет адрес: <https://www.sonicwall.com/support>

Tímto SonicWall Inc. prohlašuje, že typ rádiového zařízení 2.4 GHz and 5 GHz RLAN/WLAN je v souladu se směrnicí 2014/53/EU. Uplně znění EU prohlášení o shodě je k dispozici na této internetové adrese: <https://www.sonicwall.com/support>

Hermed erklærer SonicWall Inc., at radioudstyrstypen 2.4 GHz and 5 GHz RLAN/WLAN er i overensstemmelse med direktiv 2014/53/EU. EU-overensstemmelseserklæringens fulde tekst kan findes på følgende internetadresse: <https://www.sonicwall.com/support>

Με την παρούσα ο/η SonicWall Inc., δηλώνει ότι ο ραδιοεπιλαμός 2.4 GHz and 5 GHz RLAN/WLAN πληροί την οδηγία 2014/53/ΕΕ. Το πλήρες κείμενο της δήλωσης συμμόρφωσης ΕΕ διατίθεται στην ακόλουθη ιστοσελίδα στο διαδίκτυο: <https://www.sonicwall.com/support>

Por la presente, SonicWall Inc. declara que el tipo de equipo radioeléctrico 2.4 GHz and 5 GHz RLAN/WLAN es conforme con la Directiva 2014/53/UE. El texto completo de la declaración UE de conformidad está disponible en la dirección Internet siguiente: <https://www.sonicwall.com/support>

Käesolevaga deklareerib SonicWall Inc., et käesolev raadioseadme tüüp 2.4 GHz and 5 GHz RLAN/WLAN vastab direktiivi 2014/53/EL nõuetele. Eli vastavusdeklaratsiooni täielik tekst on kätesaadav järgmisel internetiaadressil: <https://www.sonicwall.com/support>

The included power cord(s) are approved for use only in specific countries or regions. Before using a power cord, verify that it is rated and approved for use in your location.

Ensure that no water or excessive moisture can enter the unit.

Allow unrestricted airflow around the unit and through the vents on the side of the unit. A minimum of 1 inch (25.44mm) clearance is recommended.

Consideration must be given to the connection of the equipment to the supply circuit. Appropriate consideration of equipment nameplate ratings must be used when addressing this concern. Do not overload the circuit.

This equipment is not intended for use at workplaces with visual display units, in accordance with §2 of the German ordinance for workplaces with visual display units. To avoid incommoding reflections at visual display workplaces this device must not be placed in the direct field of view.

Lithium Battery Warning

The Lithium Battery used in the SonicWall security appliance may not be replaced by the user. Return the SonicWall security appliance to a SonicWall-authorized service center for replacement with the same or equivalent type recommended by the manufacturer. If, for any reason, the battery or SonicWall security appliance must be disposed of, do so following the battery manufacturer's instructions.

Cable Connections

All Ethernet and RS232 (Console) cables are designed for intra-building connection to other equipment. Do not connect these ports directly to communication wiring or other wiring that exits the building where the SonicWall appliance is located.

Power Supply Information

If the power supply is missing from your SonicWall product package, please contact SonicWall Technical Support at <https://www.sonicwall.com/support/contact-support> for a replacement. This product should only be used with a UL listed power supply marked “I.T.E. LPS” with an output rated 12V DC, minimum 2.0 A, Tma: minimum 40 degree C.

Exigences relatives à l'installation

Procédez au montage dans un endroit à l'abri des rayons du soleil et des sources de chaleur. Une température ambiante maximale de 40 °C (104 °F) est recommandée.

Faites passer les câbles à une distance raisonnable des lignes électriques, des luminaires à lampe fluorescente et des sources de bruit telles que les radios, les émetteurs et les amplificateurs à large bande.

Les cordons d'alimentation inclus sont uniquement approuvés pour une utilisation dans certaines régions et certains pays. Avant d'utiliser un cordon d'alimentation, vérifiez qu'il est bien conforme et approuvé aux normes de votre emplacement.

Veillez à éviter tout contact de l'appareil avec de l'eau ou une humidité excessive.



SonicWall Inc. vakuuttaa, että radiolaitetyypyi 2.4 GHz and 5 GHz RLAN/WLAN on direktiivin 2014/53/EU mukainen. EU-vaatimustenmukaisuusvakuutuksen täysimittainen teksti on saatavilla seuraavassa internetosoitteessa: <https://www.sonicwall.com/support>

SonicWall Inc. ovime izjavljuje da je radijska oprema tipa 2.4 GHz and 5 GHz RLAN/WLAN u skladu s Direktivom 2014/53/EU. Cjeloviti tekst EU izjave o sukladnosti dostupan je na sljedećoj internetskoj adresi: <https://www.sonicwall.com/support>

SonicWall Inc. igazolja, hogy a 2.4 GHz and 5 GHz RLAN/WLAN típusú rádióberendezés megfelel a 2014/53/EU irányelvnek. Az EU-megfelelőségi nyilatkozat teljes szövege elérhető a következő internetes címen: <https://www.sonicwall.com/support>

Il fabbricante, SonicWall Inc., dichiara che il tipo di apparecchiatura radio 2.4 GHz and 5 GHz RLAN/WLAN è conforme alla direttiva 2014/53/UE. Il testo completo della dichiarazione di conformità UE è disponibile al seguente indirizzo Internet: <https://www.sonicwall.com/support>

Aš, SonicWall Inc., patvirtinu, kad radijo įrenginių tipas 2.4 GHz and 5 GHz RLAN/WLAN atitinka Direktyvą 2014/53/ES. Visas ES atitikties deklaracijos tekstas prieinamas šiuo interneto adresu: <https://www.sonicwall.com/support>

Ar šo SonicWall Inc. deklarā, ka radioiekārta 2.4 GHz and 5 GHz RLAN/WLAN atbilst Direktīvai 2014/53/ES. Pilns ES atbilstības deklarācijas teksts ir pieejams šādā interneta vietnē: <https://www.sonicwall.com/support>

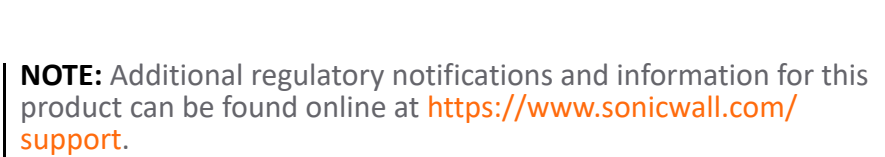
B'dan, SonicWall Inc., niddikjara li dan it-tip ta' taghmir tar-radju 2.4 GHz and 5 GHz RLAN/ WLAN huwa konformi mad-Direttiva 2014/53/UE. It-test kollu tad-dikjarazzjoni ta' konformità tal-UE huwa disponibbli f'dan l-indirizz tal-Internet li ġej: <https://www.sonicwall.com/support>

SonicWall Inc. niniejszym oświadcza, że typ urządzenia radiowego 2.4 GHz and 5 GHz RLAN/ WLAN jest zgodny z dyrektywą 2014/53/UE. Pełny tekst deklaracji zgodności UE jest dostępny pod następującym adresem internetowym: <https://www.sonicwall.com/support>

Prin prezenta, SonicWall Inc. declară că tipul de echipamente radio 2.4 GHz and 5 GHz RLAN/ WLAN este in conformitate cu Directiva 2014/53/UE. Textul integral al declarației UE de conformitate este disponibil la următoarea adresă internet: <https://www.sonicwall.com/support>

SonicWall Inc. týmto vyhlasuje, že rádiové zariadenie typu 2.4 GHz and 5 GHz RLAN/WLAN je v súlade so smernicou 2014/53/EÚ. Uplné EÚ vyhlásenie o zhode je k dispozícii na tejto internetovej adrese: <https://www.sonicwall.com/support>

SonicWall Inc. potvrjuje, da je tip radijske opreme 2.4 GHz and 5 GHz RLAN/WLAN skladen z Direktivo 2014/53/EU. Celotno besedilo izjave EU o skladnosti je na voljo na naslednjem spletnem naslovu: <https://www.sonicwall.com/support>



NOTE: Additional regulatory notifications and information for this product can be found online at <https://www.sonicwall.com/support>.